

FOR LEASE

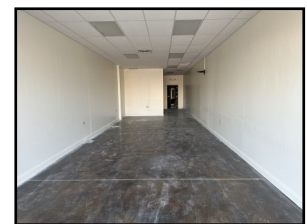
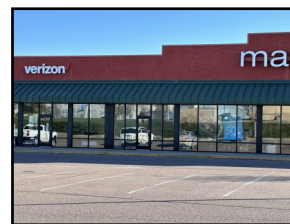


SUPER CENTER SQUARE

1702 Westridge Road
New Ulm, MN 56073

Features:

Rate	\$16.00 per square foot Net
Property Type	Retail
Floors	1
Year Built	2007
County	Brown
Availabilities	1,200 sq ft currently vacant
Operating Expenses	\$3.22 (est. 2023)
PID	015-00182700101010
Parking	Surface parking lot
Other	<ul style="list-style-type: none">◆ 1,200 sq ft in a vanilla shell◆ Shadow anchored by Walmart and Aldi◆ Neighboring tenants include Verizon, Maurices, and Great Clips



About The Area:

New Ulm is located 90 miles southwest of the Twin Cities and is known as "the most German town in America". With a population of 14,120 (est. 2020) New Ulm is a safe, friendly and welcoming small town.

About The Building:

This retail center was constructed in 2007. It is shadow anchored by Walmart and Aldi located just off of US Hwy 14, close to New Ulm High School and Martin Luther College, and is in a developing area.

Neighboring tenants include Verizon, Maurices, Great Clips, Dollar Tree, and Shoe Sensation.



JBL COMPANIES

3440 Federal Drive, Suite 250, Eagan, MN 55122 | Phone: 651-686-0212 | Fax: 651-686-6113 | jblbrokerage@jblcompanies.com

JBLCOMPANIES.COM