

# FOR LEASE



## YANKEE SQUARE I

3440 Federal Drive  
Eagan, MN 55122

### Features:

Rate	\$12.00 psf net
Property Type	Office Building
Floors	2
Year Built	1981
County	Dakota
Availabilities	Suite 150—1,187 rsf
CAM Taxes	\$6.18 (est. 2024) \$2.22 (est. 2024)
PID	10-14004-01-010
Zoning	Office
Parking	Surface parking lot
Other	<ul style="list-style-type: none"><li>◆ Great Eagan Location</li><li>◆ Minutes to MSP Airport and Mall of America</li><li>◆ Close to hotels, restaurants and retail including Central Park Commons.</li></ul>

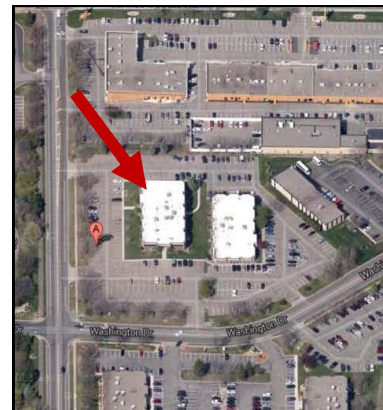


### About The Area:

Eagan is a Southern suburb of St. Paul/Minneapolis with an estimated population of 69,000 and is the 4th largest suburb in the Twin Cities. This property is located off of Pilot Knob and Yankee Doodle Road near I-35E.

### About The Building:

This Office Building was constructed in 1981 and has recently been renovated. It is conveniently located just off of Pilot Knob and Yankee Doodle near I-35E, close to restaurants, strip malls and convenience stores. This 2 level property provides a quiet professional setting for businesses looking for price-driven rates in a great location with plenty of amenities. The suite is an open vanilla shell ready for remodeling.

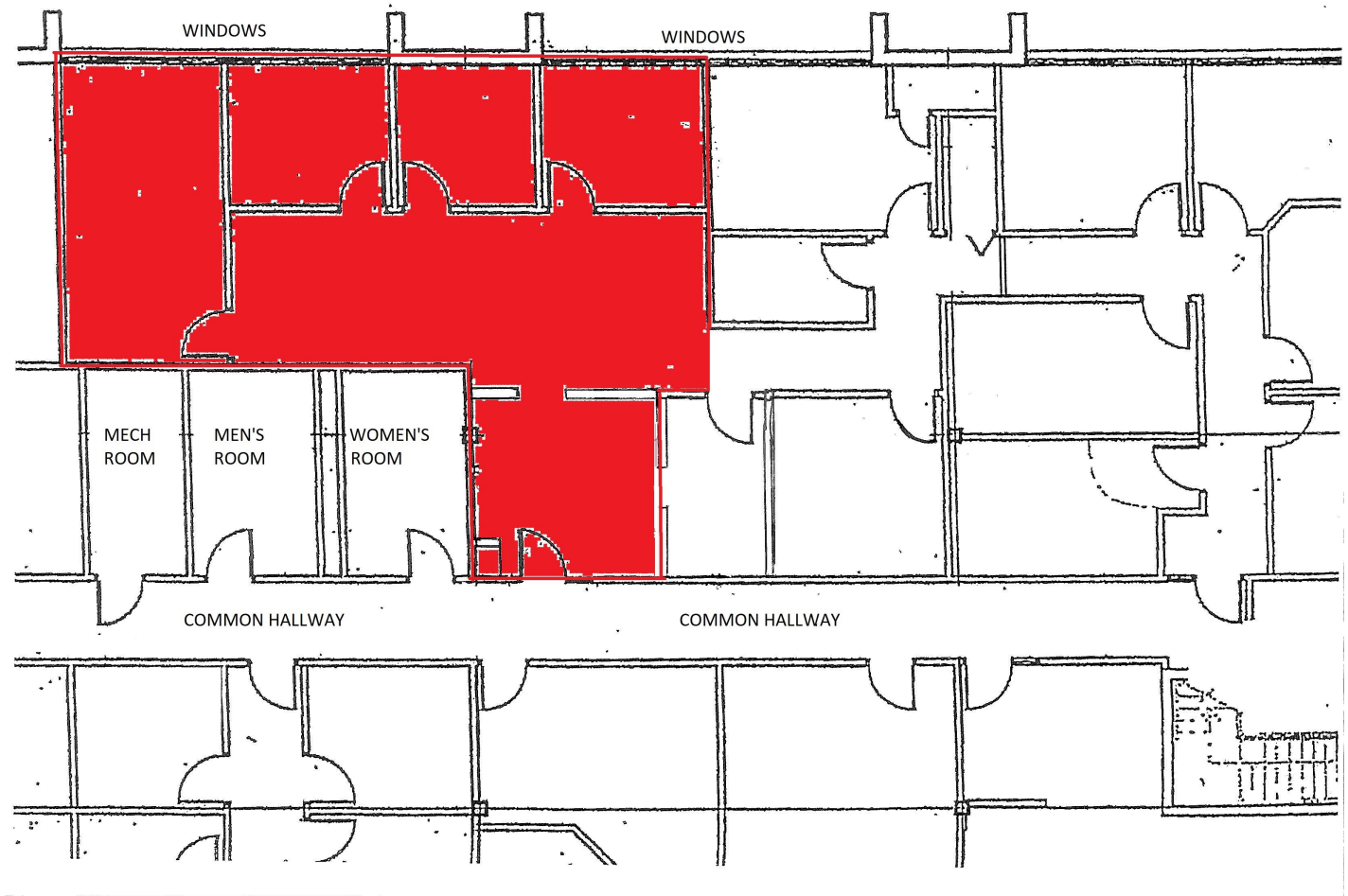


JBL COMPANIES

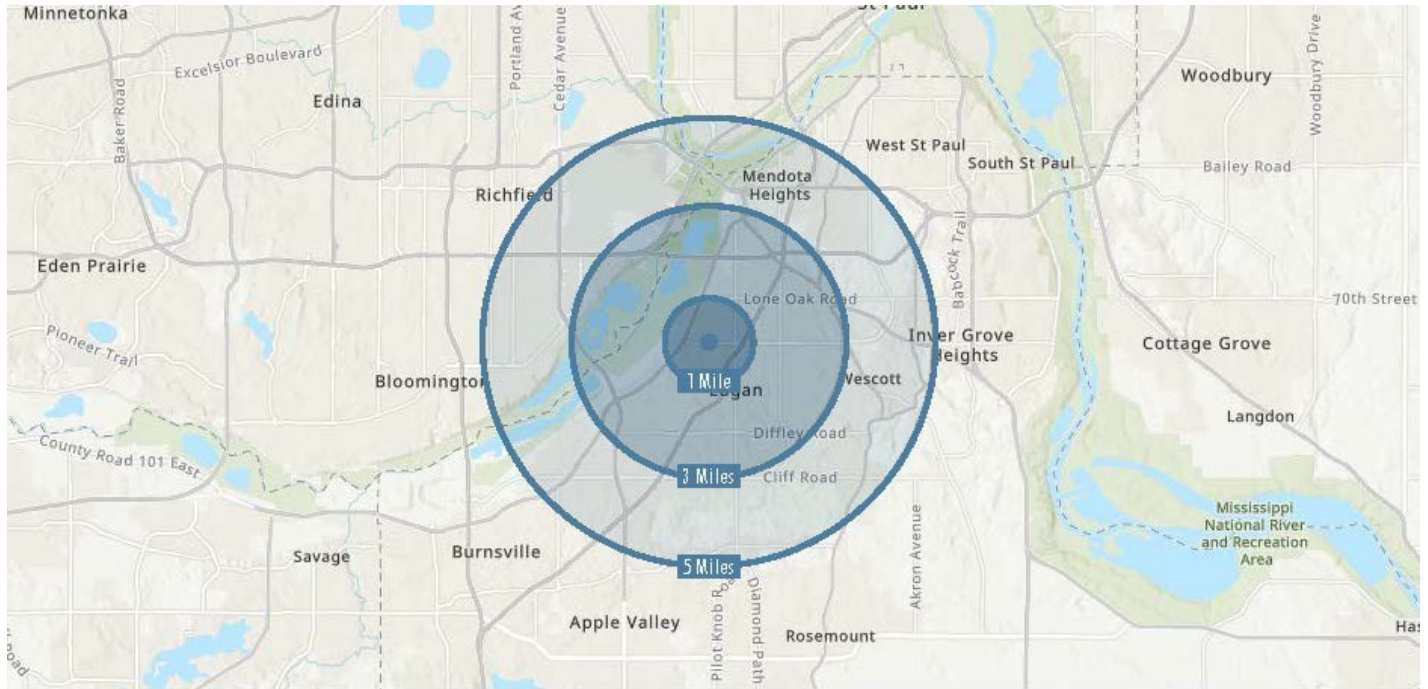
3440 Federal Drive, Suite 250, Eagan, MN 55122 | Phone: 651-686-0212 | Fax: 651-686-6113 | [jbroke@jblcompanies.com](mailto:jbroke@jblcompanies.com)

[jblcompanies.com](http://jblcompanies.com)

SUITE 150  
1,187 SQ FT



## EAGAN DEMOGRAPHICS



2022 Summary	1 Mile	3 Miles	5 Miles
Population	8,272	48,718	144,684
Households	3,685	21,285	58,319
Families	1,923	12,299	36,355
Average Household Size	2.23	2.27	2.45
Owner Occupied Housing Units	1,978	13,392	38,868
Renter Occupied Housing Units	1,707	7,894	19,451
Median Age	37.1	38.7	39.3
Median Household Income	\$81,543	\$90,248	\$91,081
Average Household Income	\$105,938	\$123,580	\$125,594



3440 Federal Drive  
Eagan, MN 55122  
Yankee Square I Office Building

## NEARBY AMENITIES



3440 Federal Drive  
Eagan, MN 55122  
Yankee Square I Office Building

## ADDITIONAL PHOTOS

